

Adjustable float switches

Ordering example:
See Page 118

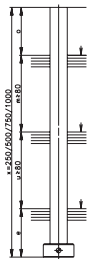
Position	1	2	3	4
Version	Magnetic float switch	Output type reed contact	Float switch – float combination	
Type	M	A		–

Min./max. dimensions

Float switch – float combination



Switching distance for falling levels

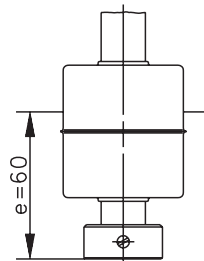


Float material

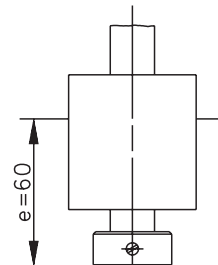
Connection head material

Float switch material

1.4571
ø 52 x 55



PVC
ø 52 x 55



Flange enclosure DN50
ø 165



1.4571/
G-Al Si 12

1.4571

N

V

PVC/
Polyester

PVC

–

D

Flange enclosure DN65
ø 185



1.4571/
G-Al Si 12

1.4571

N

V

PVC/
Polyester

PVC

–

D

Tank cable gland R1,5"



G-Al Si 12

1.4571

N

V

PVC/
Polyester

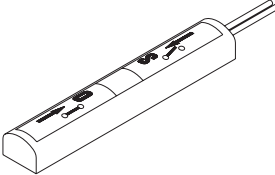
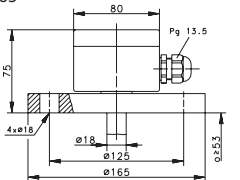
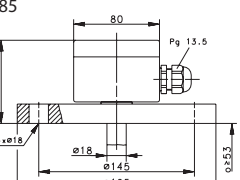
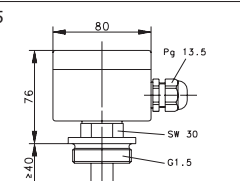
PVC

–

D

5	6	7	8
Adjustable	Connection head		Length
VST		/	

Important! Please order switching devices without switching modules separately!

Connection head	Length	Switching module	Max. number of switching modules / switching devices		
↓	↓	↓	↓		
Version	Other lengths (mm) on request		NC / NO contact	Changeover contact	
			Lengths 250 mm 500 mm 750 mm 1000 mm	Lengths 250 mm 500 mm 750 mm 1000 mm	
		NC / NO contact Bistable		Changeover contact	
FL165 	250 / 500 / 750 / 1000	4910007069	4916007075	2 / 3 / 4 / 4	2 / 3 / 3 / 3
	250 / 500 / 750 / 1000	4910007069	4916007075	2 / 3 / 4 / 4	2 / 3 / 3 / 3
	250 / 500 / 750 / 1000	4910007069	4916007075	2 / 3 / 4 / 4	2 / 3 / 3 / 3
FL185 	250 / 500 / 750 / 1000	4910007069	4916007075	2 / 3 / 4 / 4	2 / 3 / 3 / 3
	250 / 500 / 750 / 1000	4910007069	4916007075	2 / 3 / 4 / 4	2 / 3 / 3 / 3
	250 / 500 / 750 / 1000	4910007069	4916007075	2 / 3 / 4 / 4	2 / 3 / 3 / 3
R1,5 	250 / 500 / 750 / 1000	4910007069	4916007075	2 / 3 / 4 / 4	2 / 3 / 3 / 3
	250 / 500 / 750 / 1000	4910007069	4916007075	2 / 3 / 4 / 4	2 / 3 / 3 / 3
	250 / 500 / 750 / 1000	4910007069	4916007075	2 / 3 / 4 / 4	2 / 3 / 3 / 3

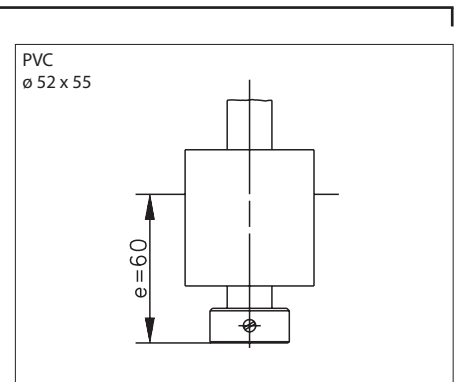
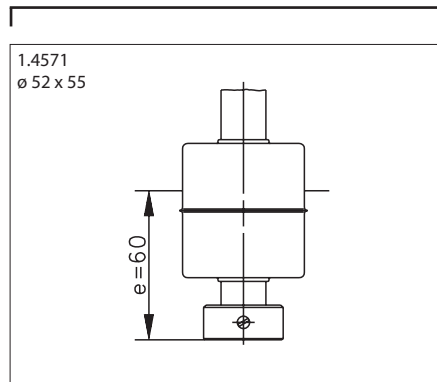
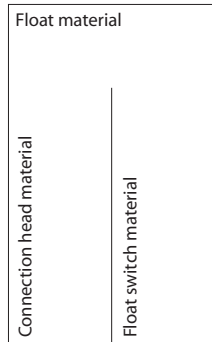
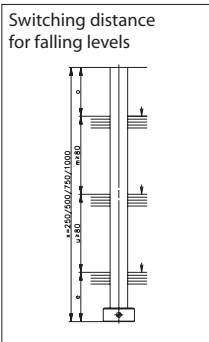
Adjustable float switches

Ordering example:
See Page 118

Position	1	2	3	4
Version	Magnetic float switch	Output type reed contact	Float switch – float combination	
Type	M	A		–

Min. / max. dimensions

Float switch – float combination



1.4571/ G-Al Si 12	1.4571	N	V
PVC/ Polyester	PVC	–	D

5	6	7	8
Adjustable	Connection head		Length
VST		/	

Important! Please order switching devices without switching modules separately!

Connection head

Length

Switching module

Max. number of switching modules / switching devices

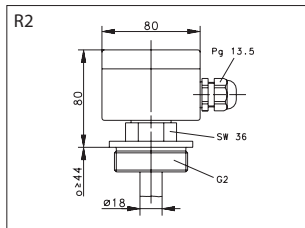


Version

Other lengths (mm) on request

NC / NO contact Bistable Changeover contact

NC / NO contact	Changeover contact
Lengths	Lengths
250 mm	250 mm
500 mm	500 mm
750 mm	750 mm
1000 mm	1000 mm



250 / 500 / 750 / 1000	4910007069	4916007075	2 / 3 / 4 / 4	2 / 3 / 3 / 3
250 / 500 / 750 / 1000	4910007069	4916007075	2 / 3 / 4 / 4	2 / 3 / 3 / 3
250 / 500 / 750 / 1000	4910007069	4916007075	2 / 3 / 4 / 4	2 / 3 / 3 / 3